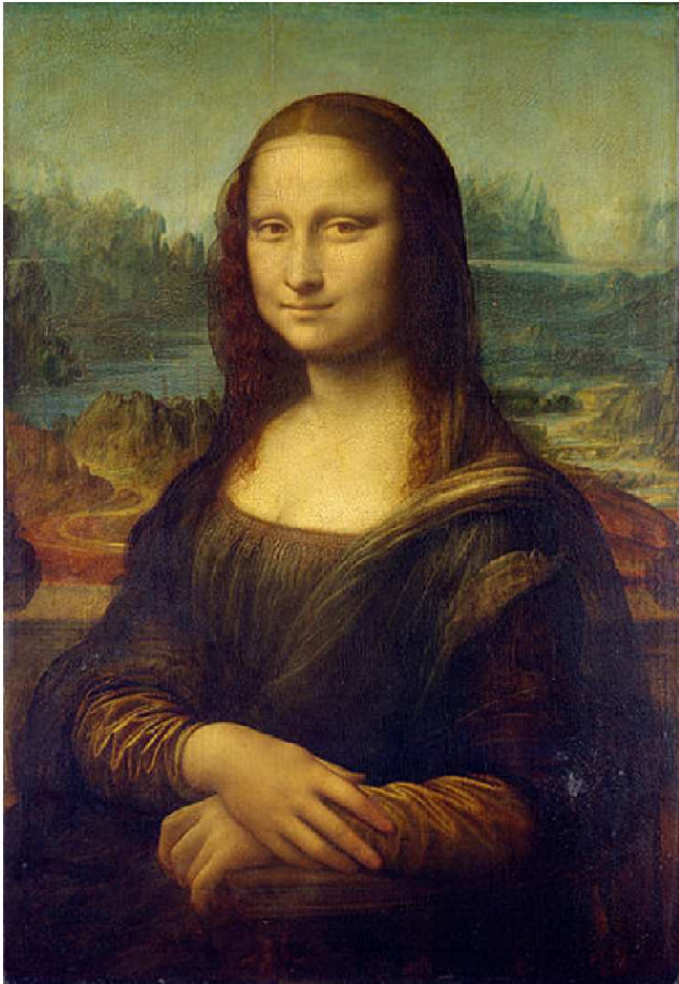


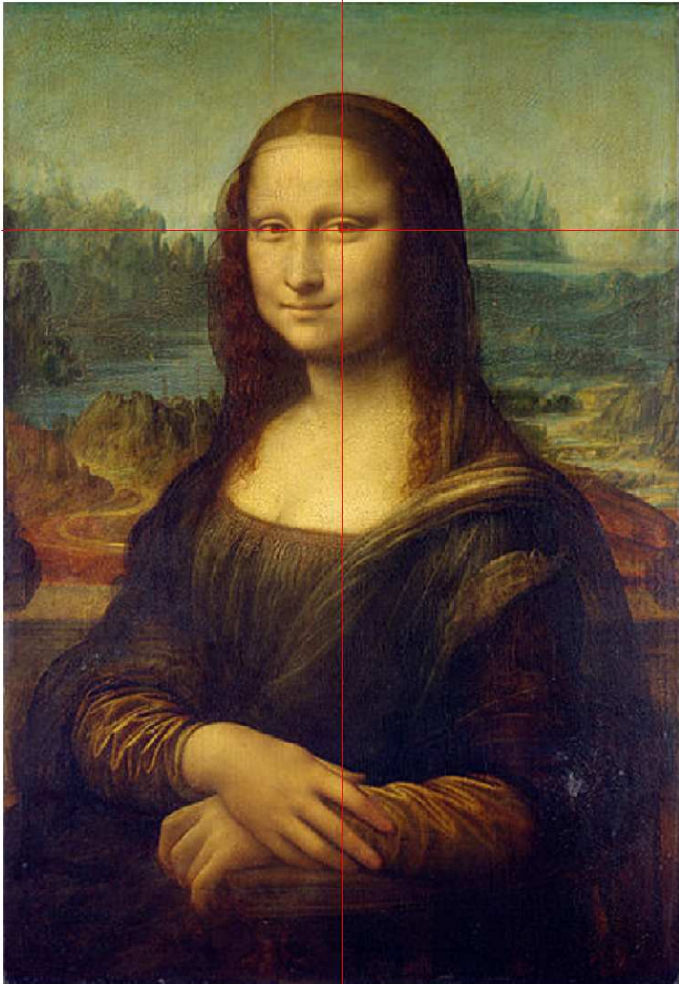
Leonardo da Vinci

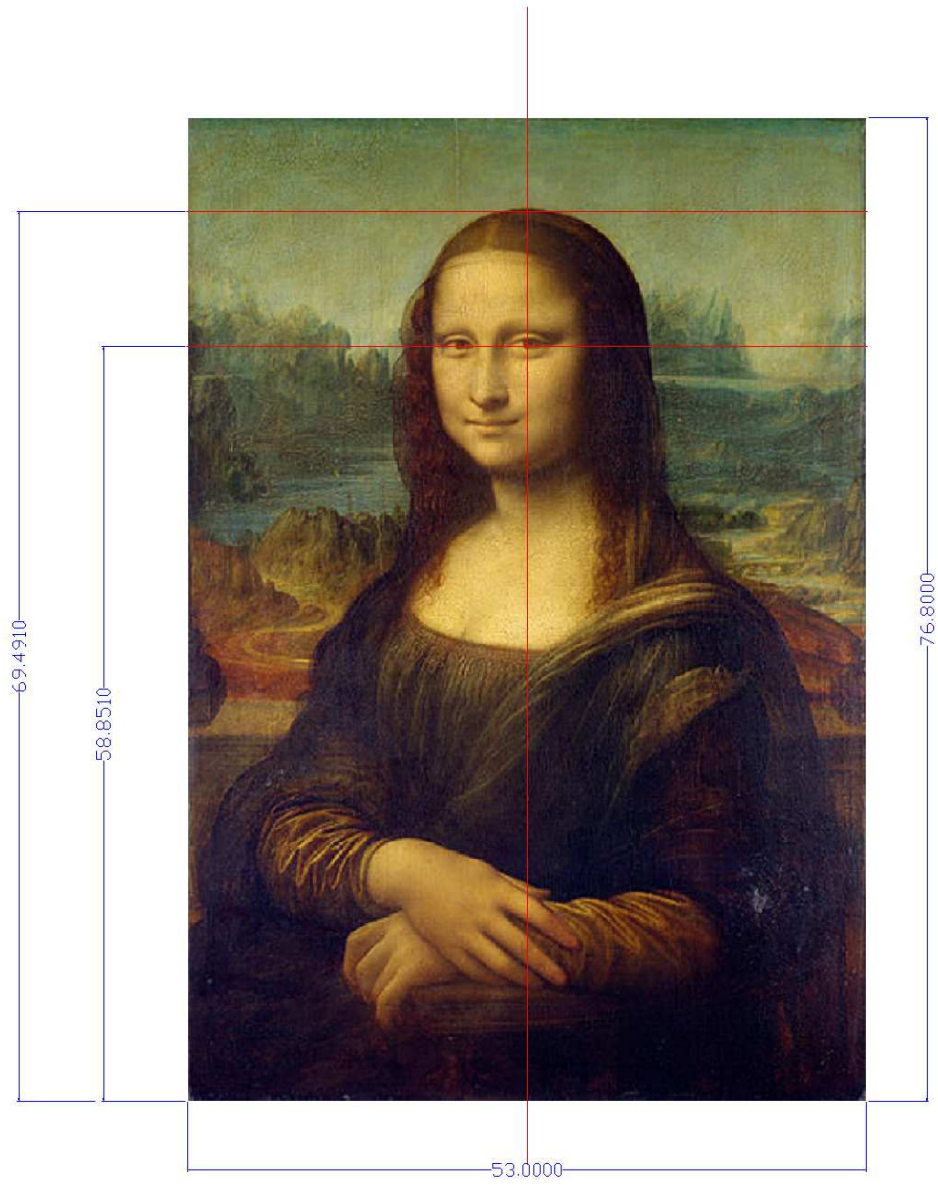
L'enigmatico sorriso della Gioconda

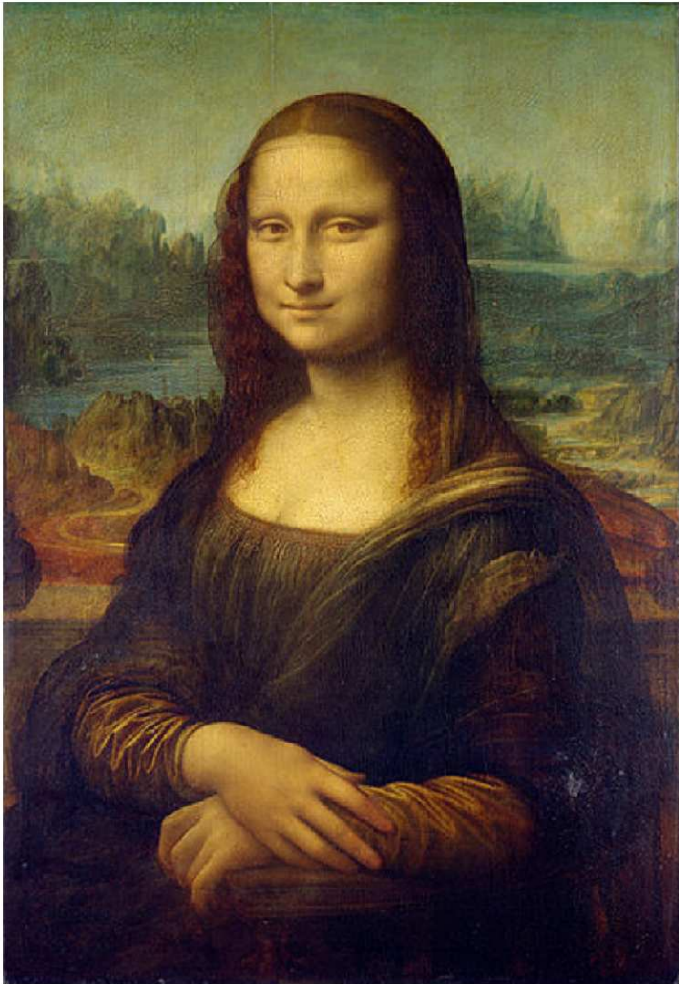
nasconde

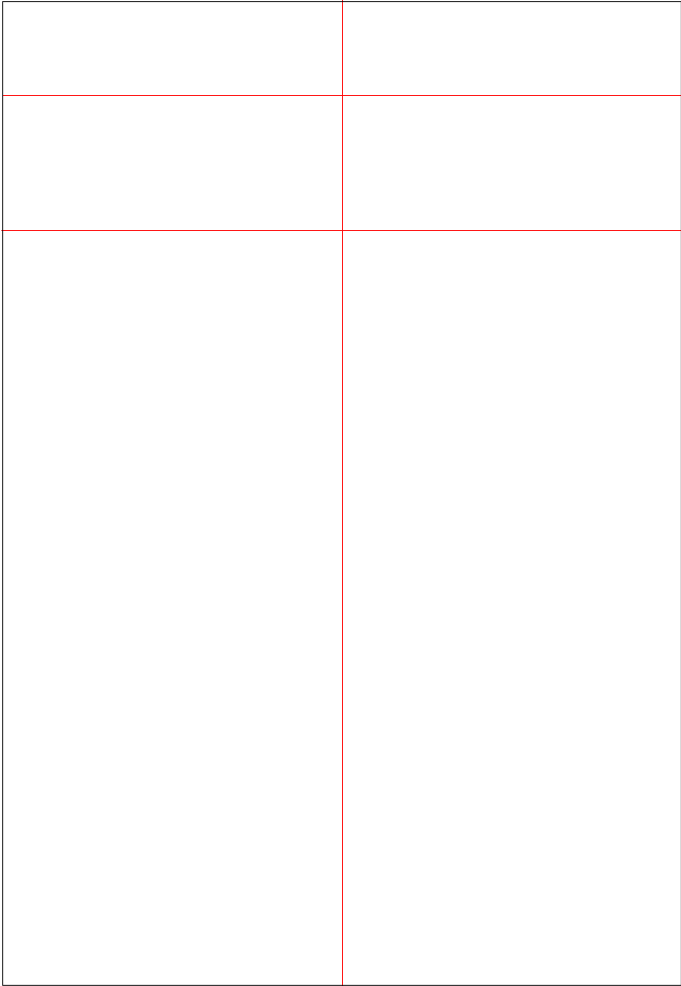
La Donna vitruviana di Leonardo

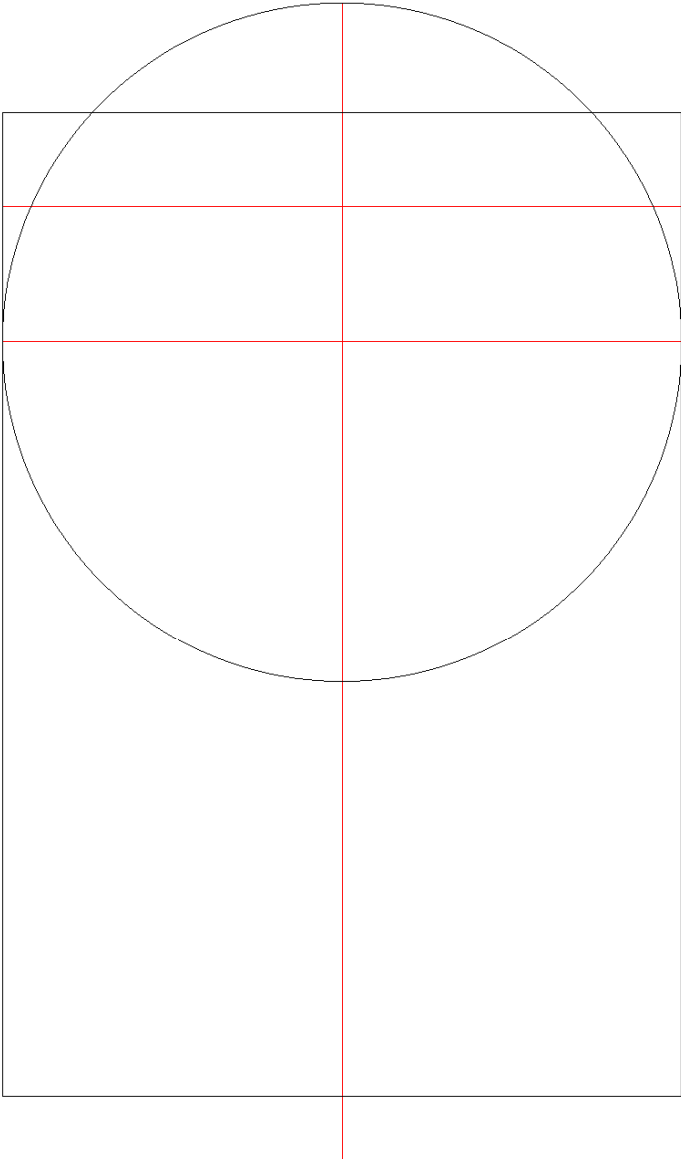


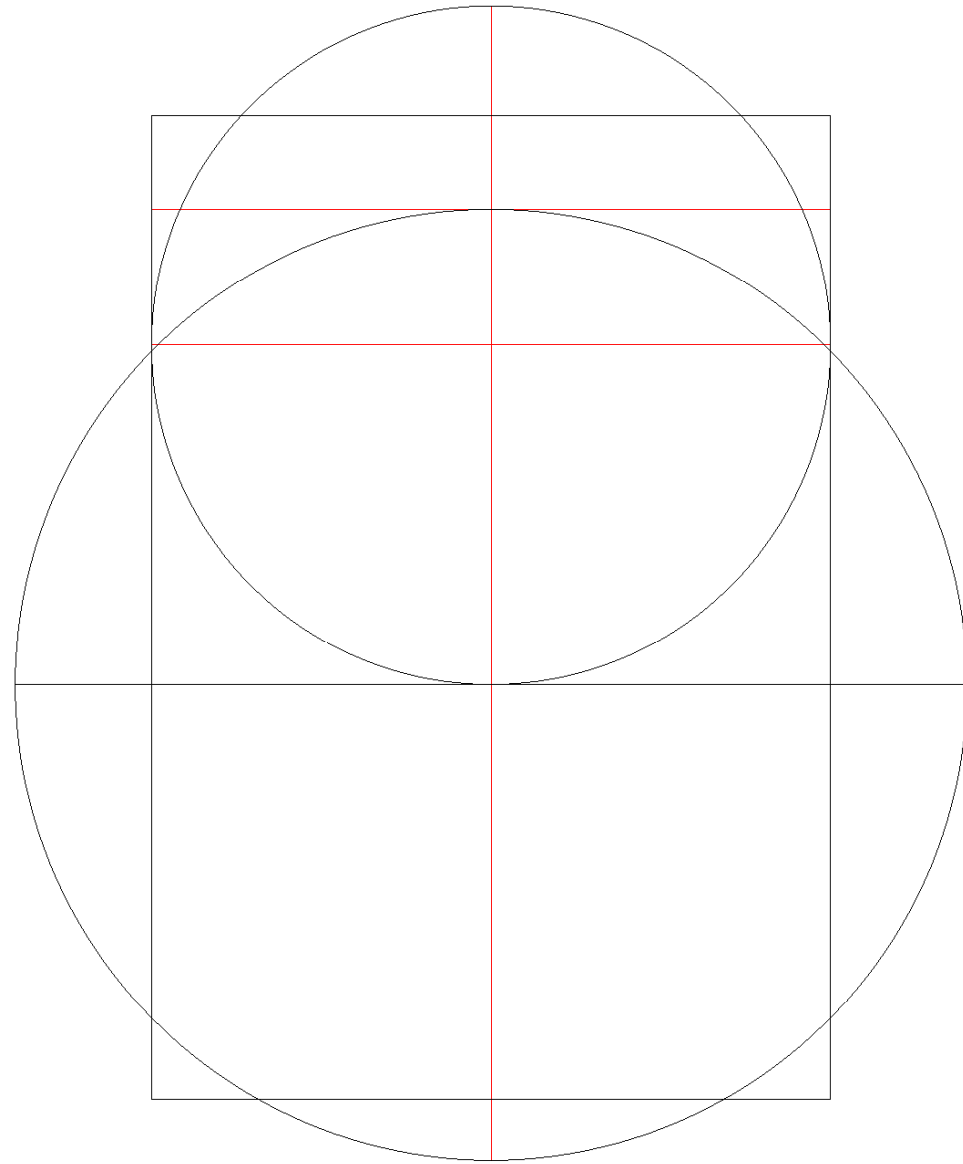


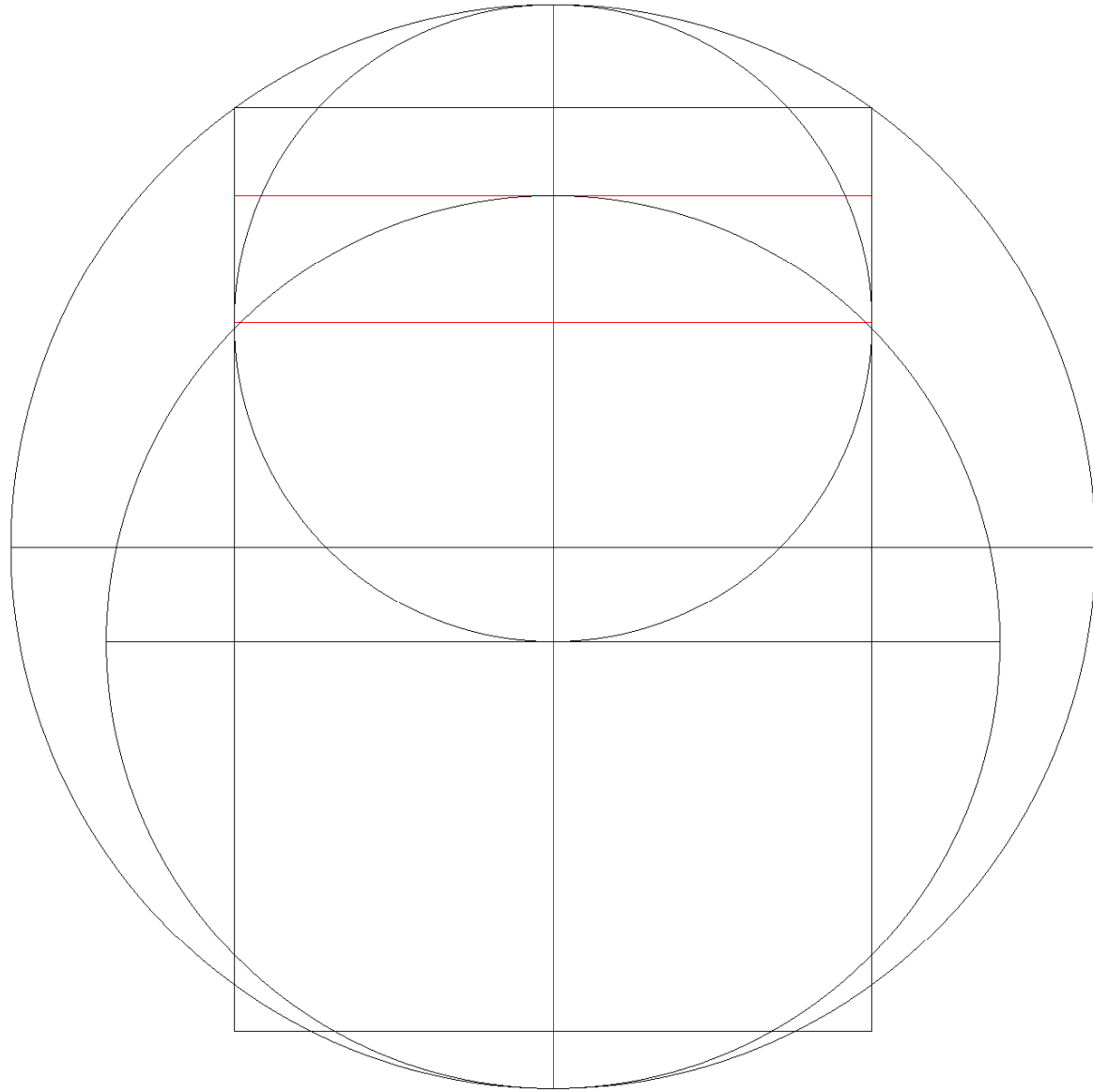


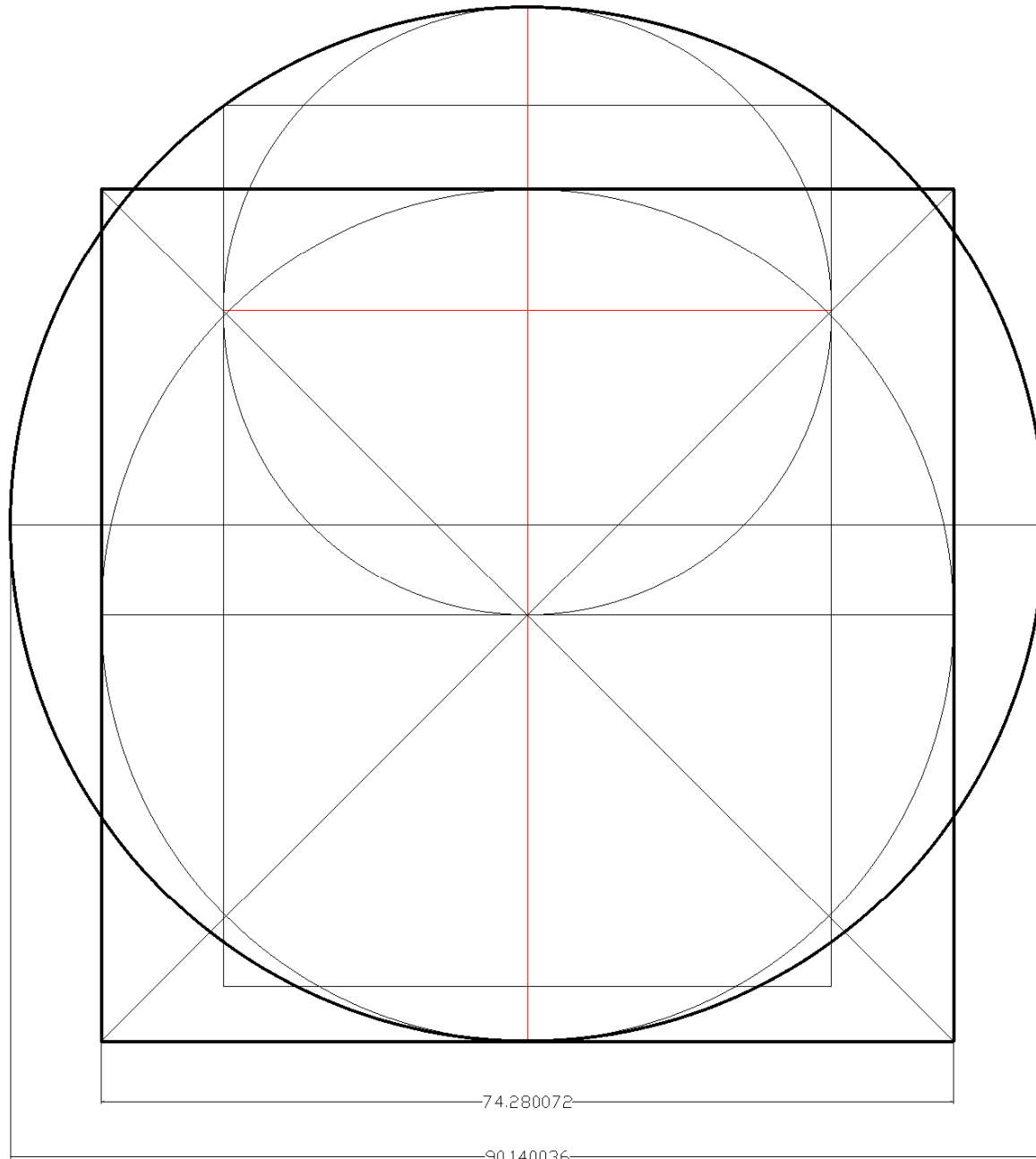






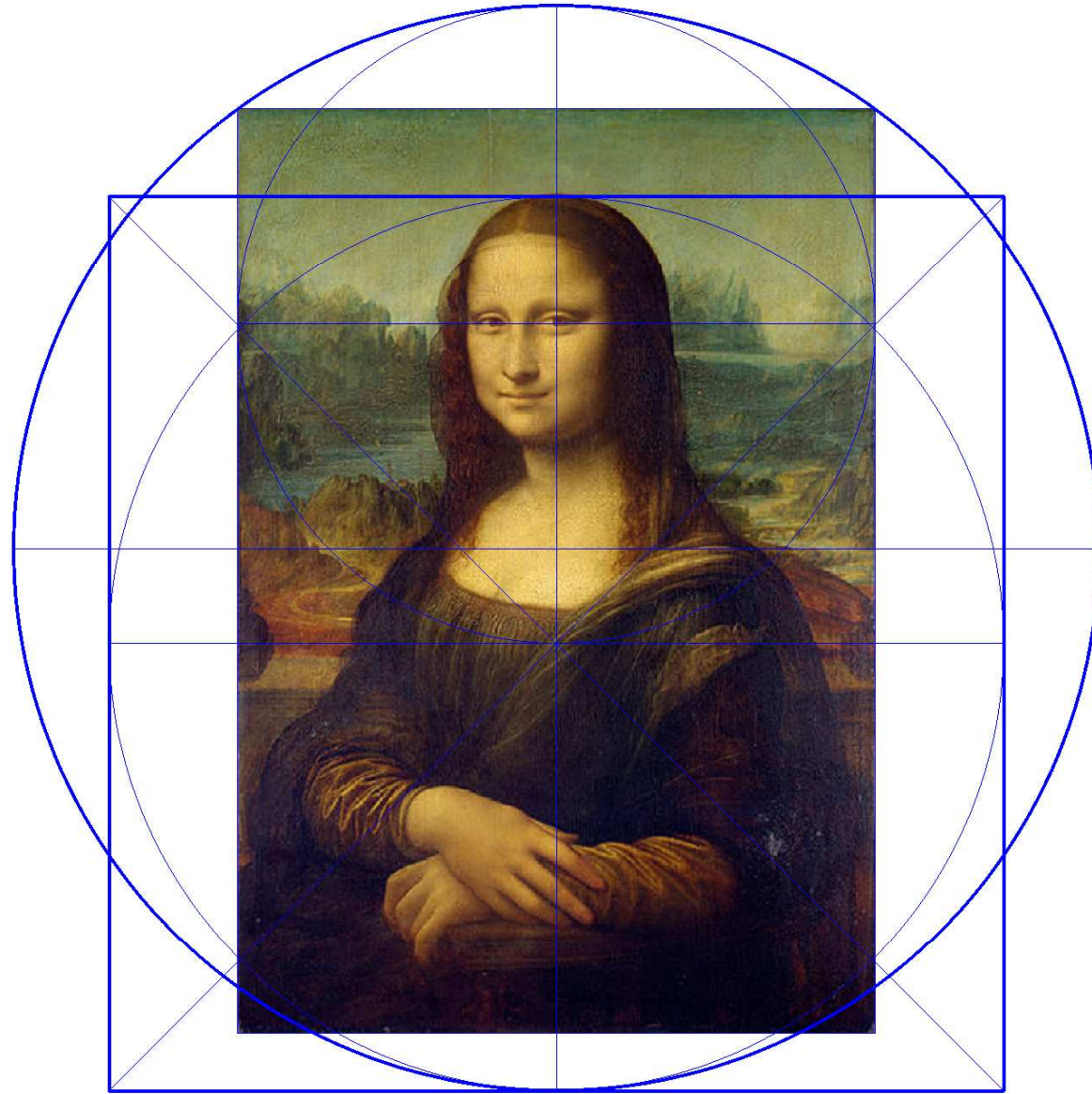




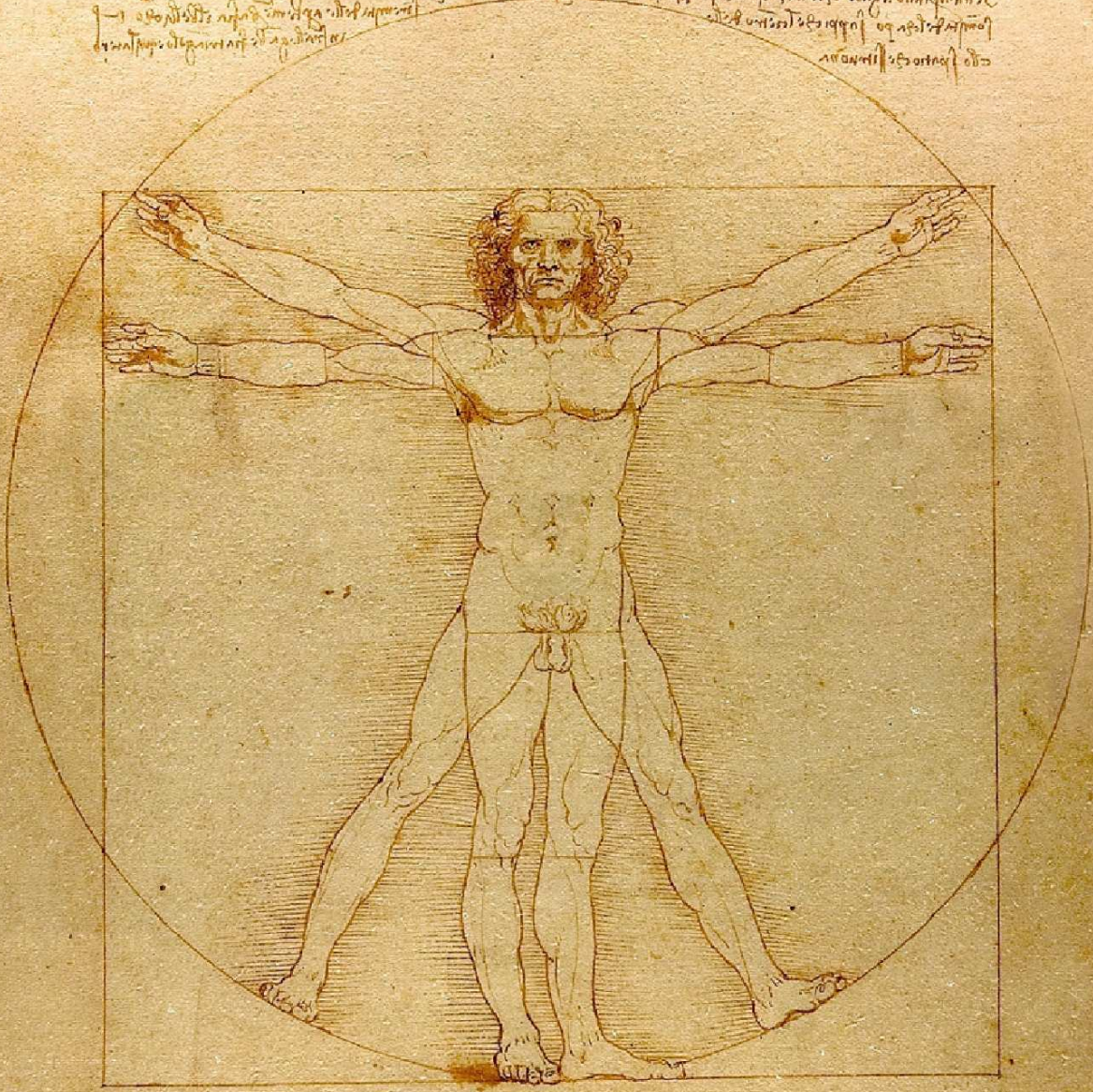


74.280072

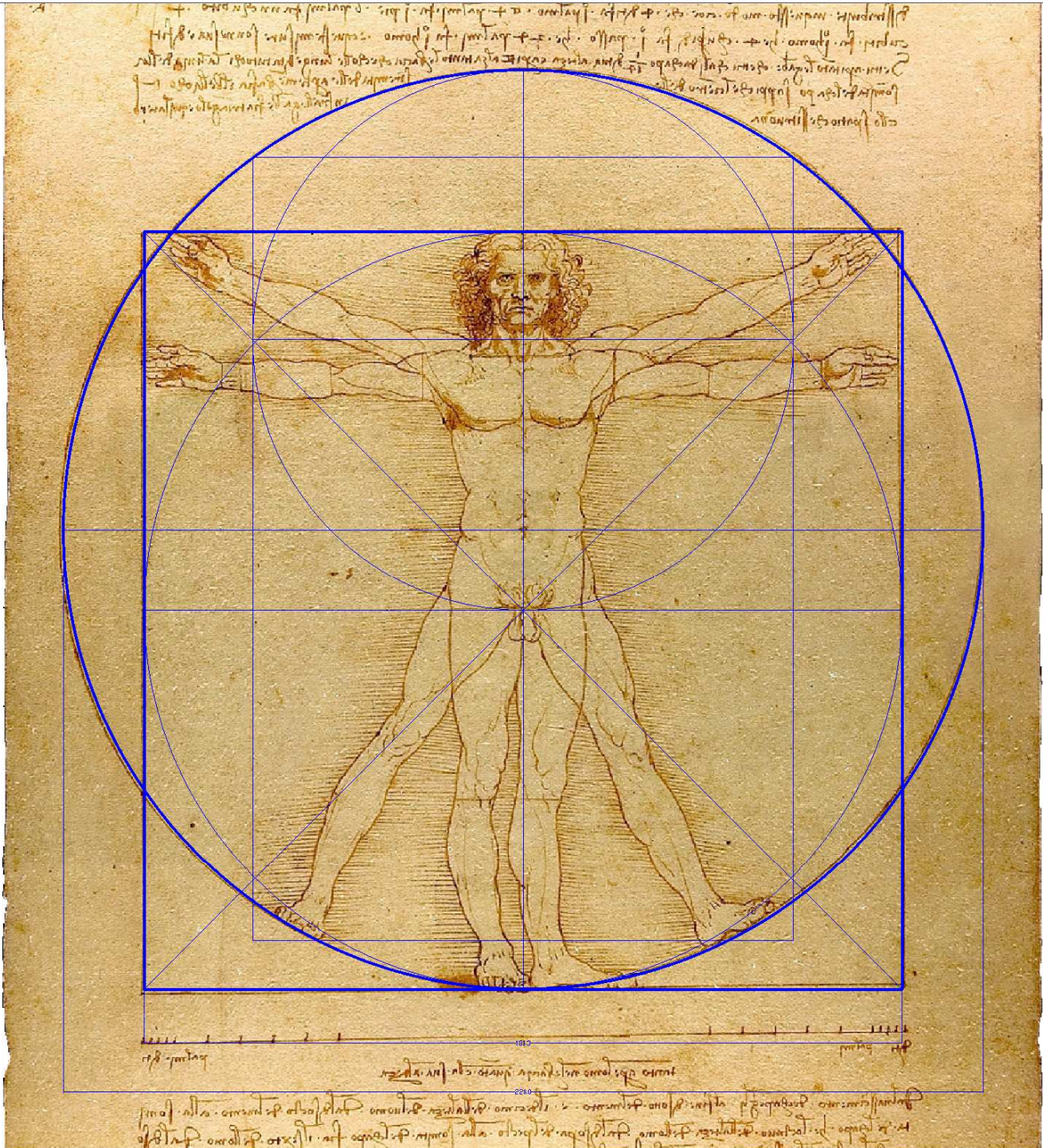
90.140036

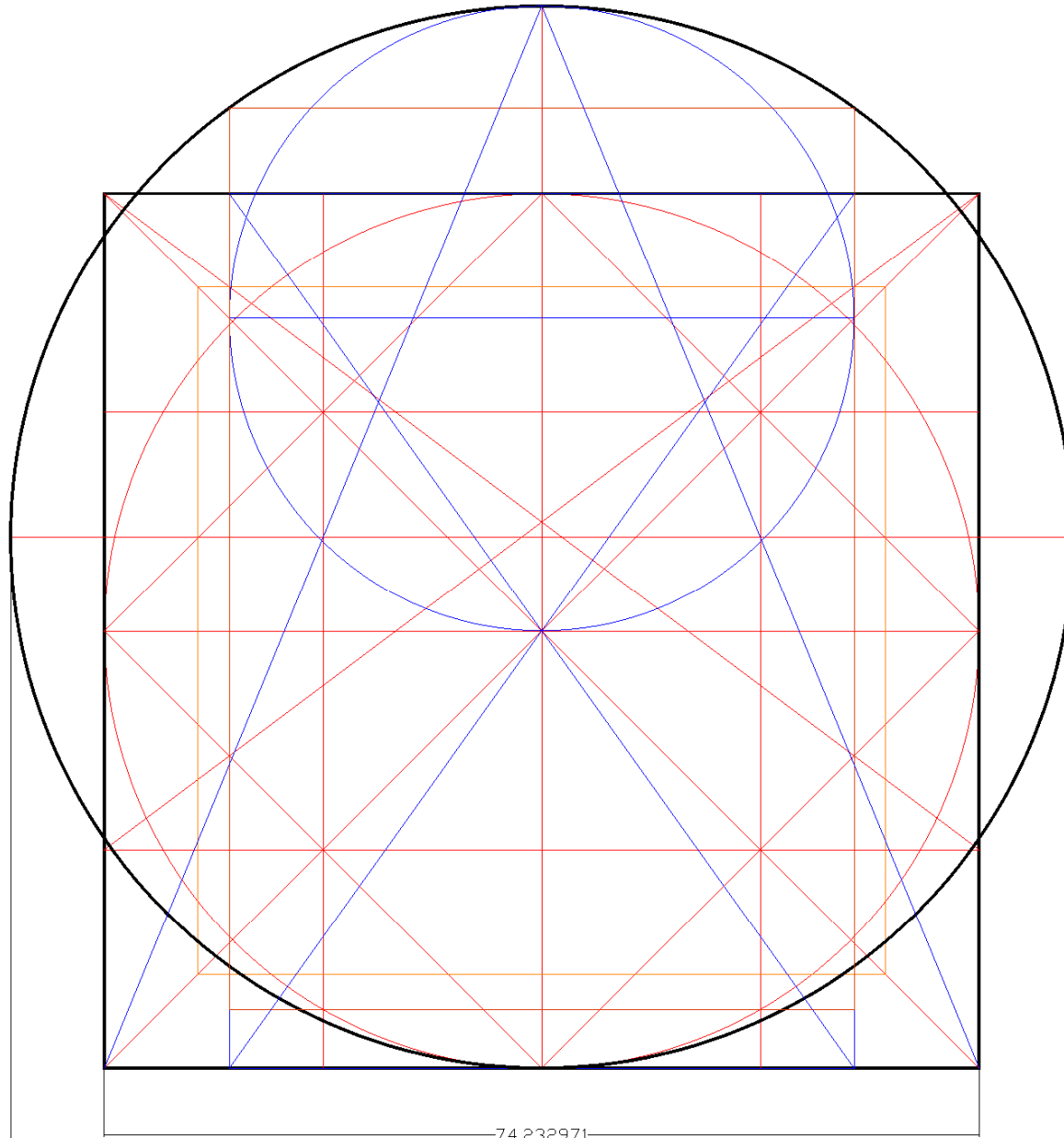


Handwritten text in a cursive script, likely a Latin or Italian manuscript, located at the top of the page. The text is arranged in several lines and appears to be a preface or introduction to the drawing below.



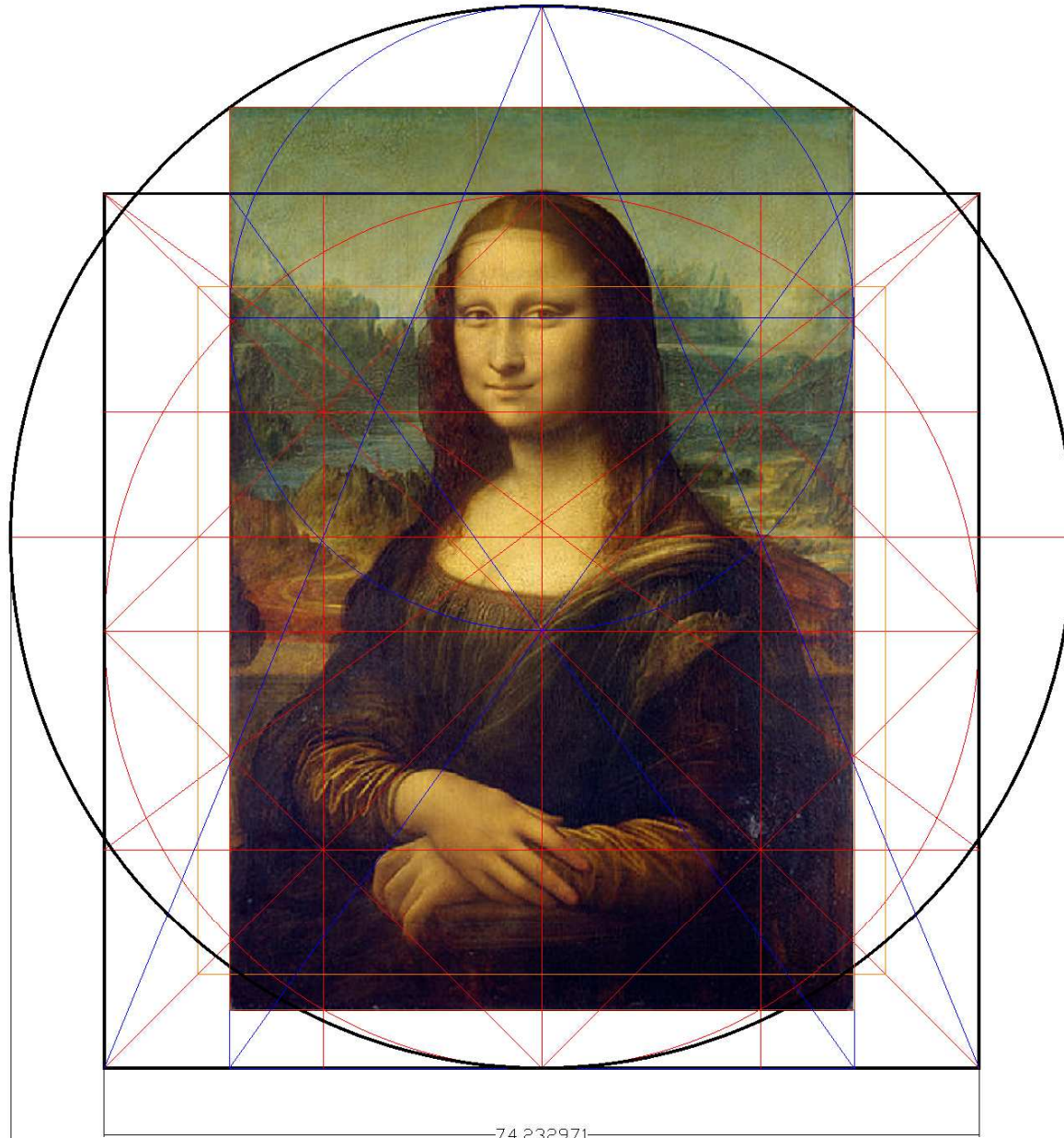
Handwritten text in a cursive script, likely a Latin or Italian manuscript, located at the bottom of the page. The text is arranged in several lines and appears to be a continuation of the text above the drawing. It includes a small diagram of a horizontal line with vertical tick marks.





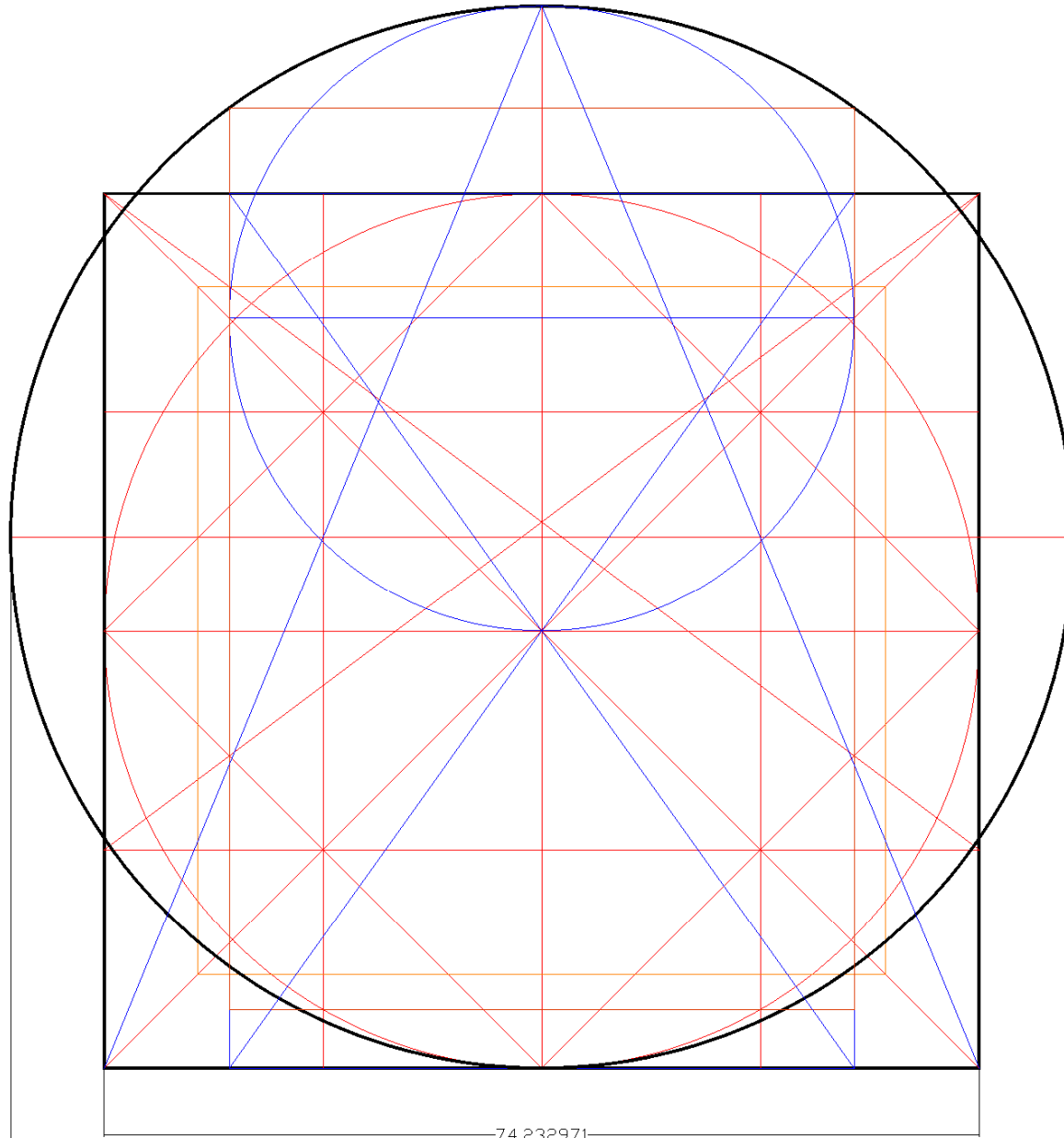
74.232971

90.140036



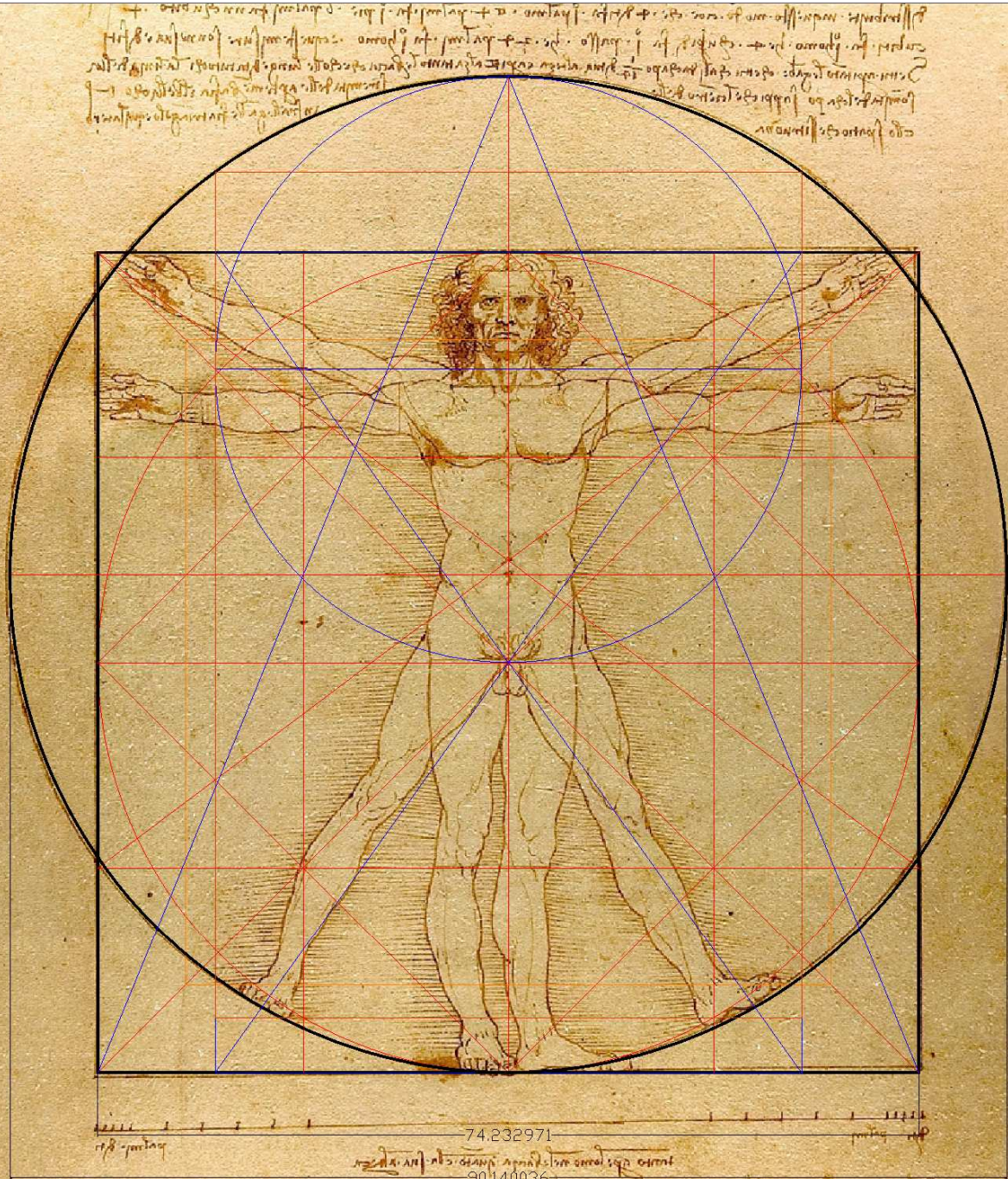
74.232971

90.140036



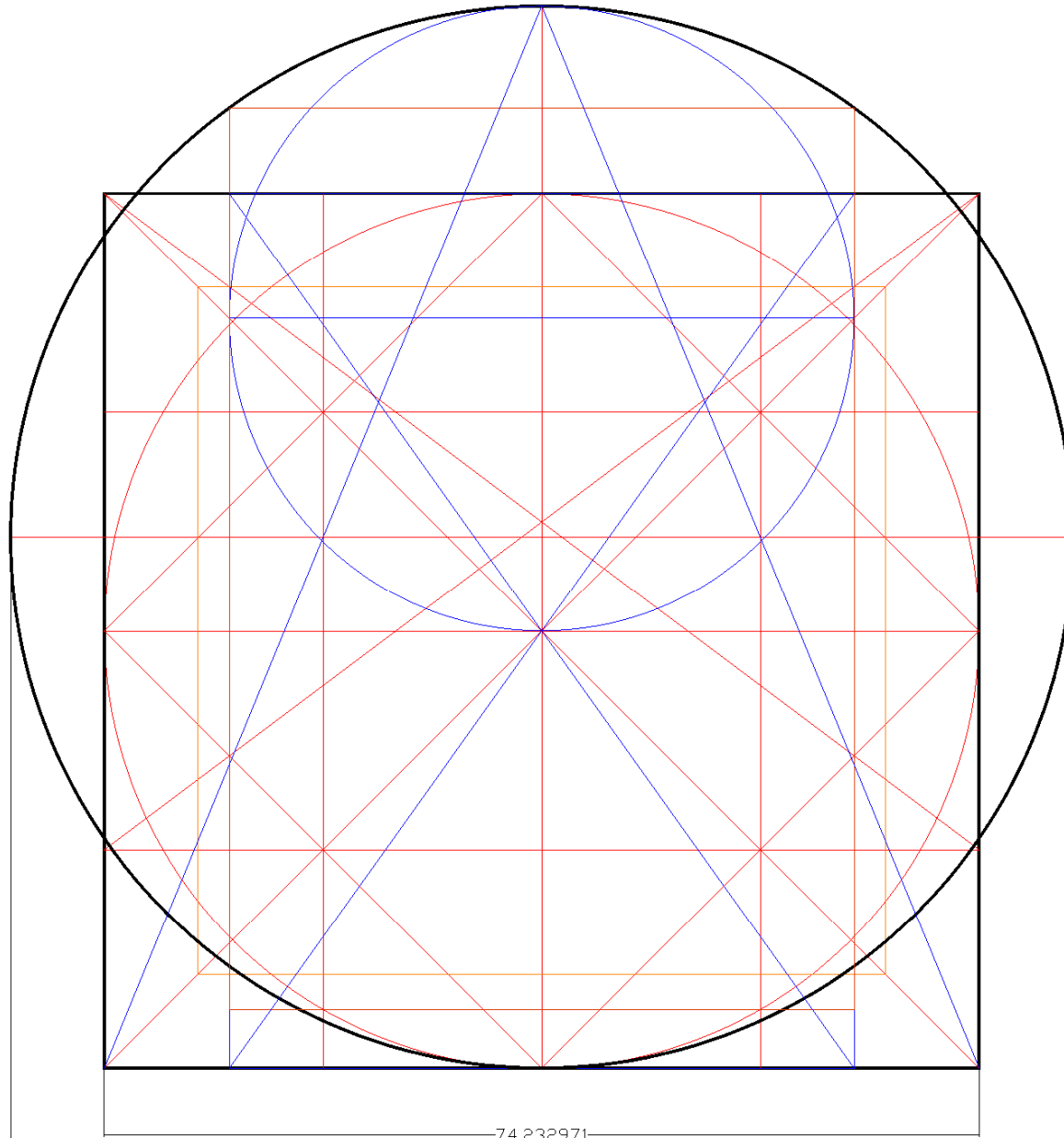
74.232971

90.140036



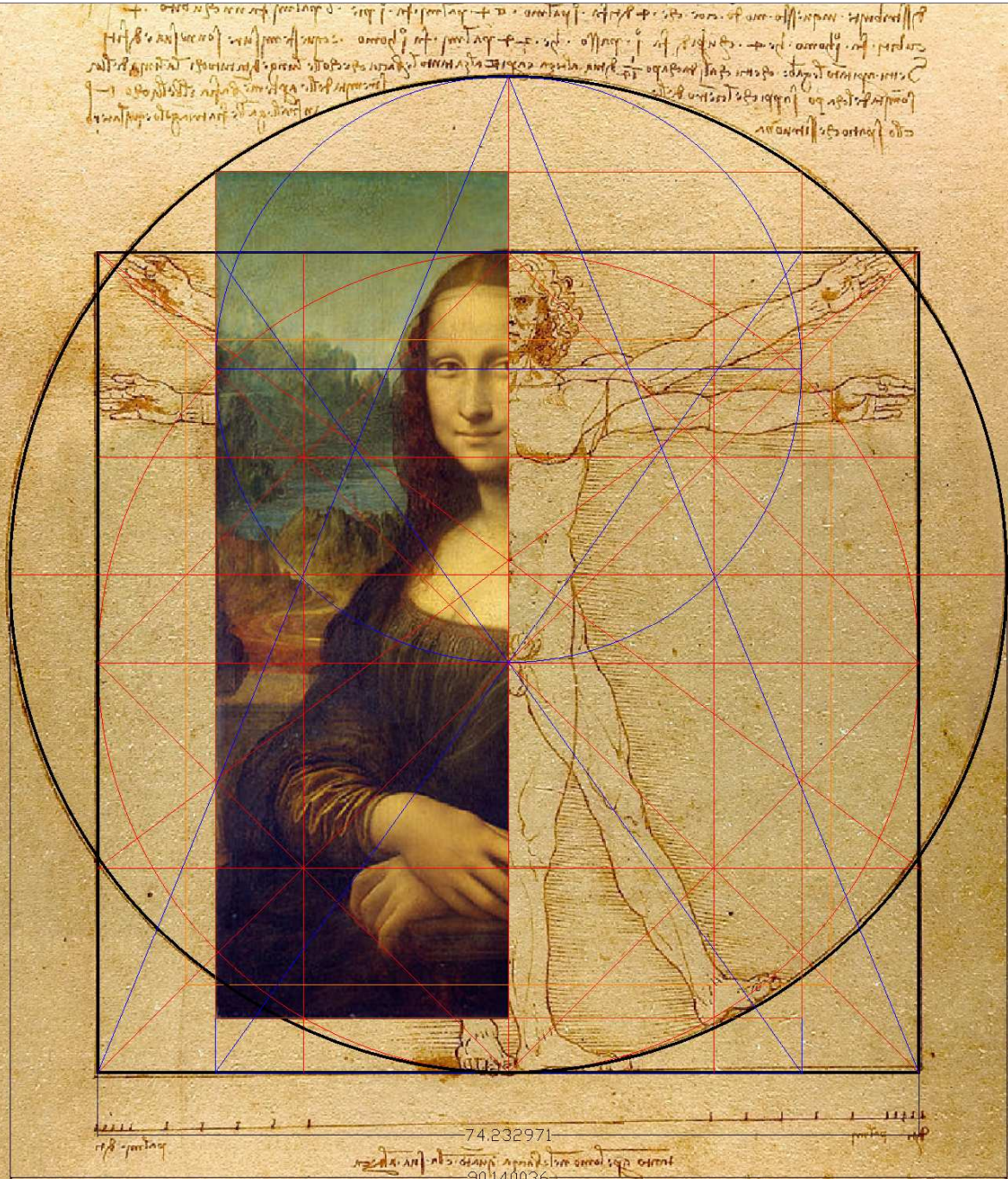
74.232971

90.140036



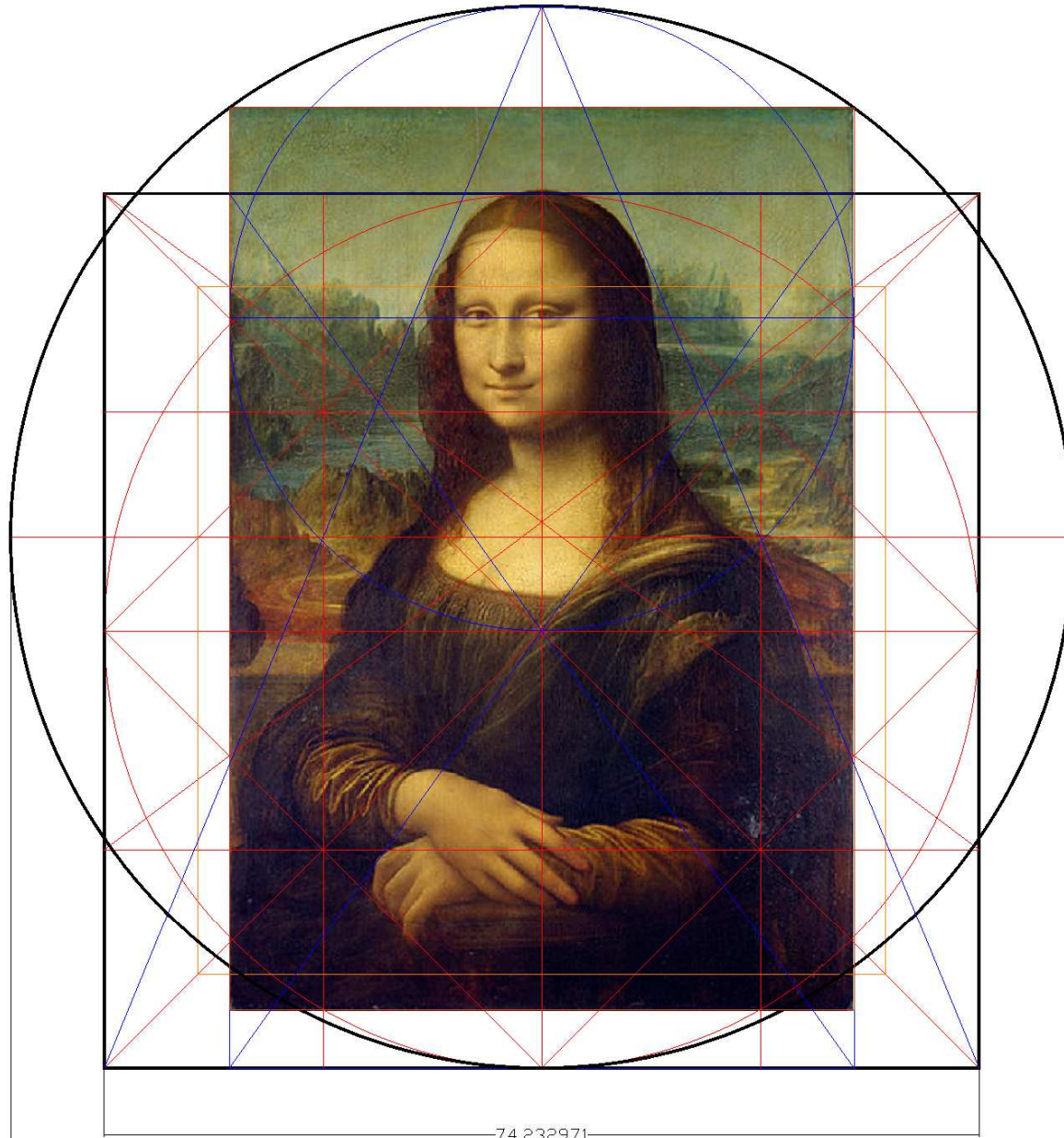
74.232971

90.140036



74.232971

90.140036



74.232971

90.140036

